



# STANDARD QUALITY

GLOBAL CONNECTION





# 3PO BASIC PART 1



*There is **one** game,  
**three** referees,  
but still only **one**  
**officiating** team.*

R3.9 Out-of-Bounds & Throw-Ins

R3.10 Shot Coverage

R3.11 Rebound Coverage

R3.12 Reporting Fouls & Switching

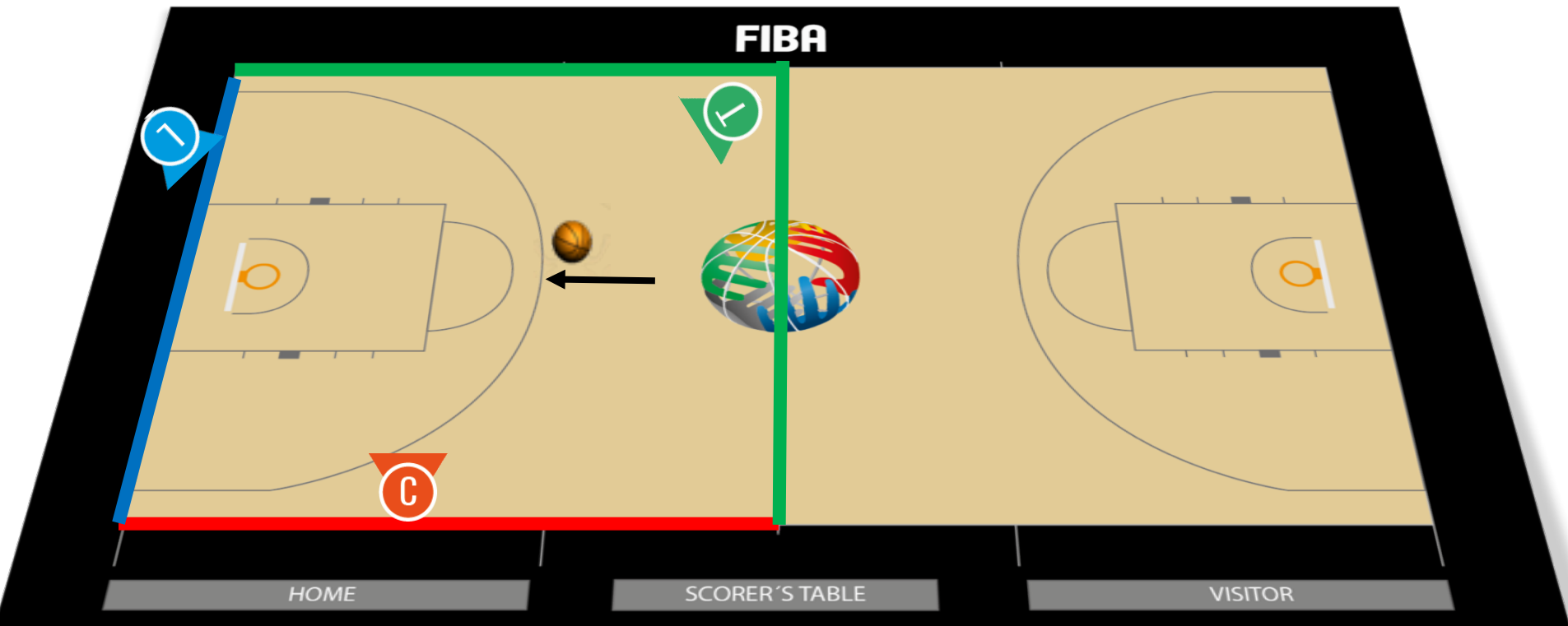
R3.13 Last Shot

R3.xx Free Throws (not in the HSB)

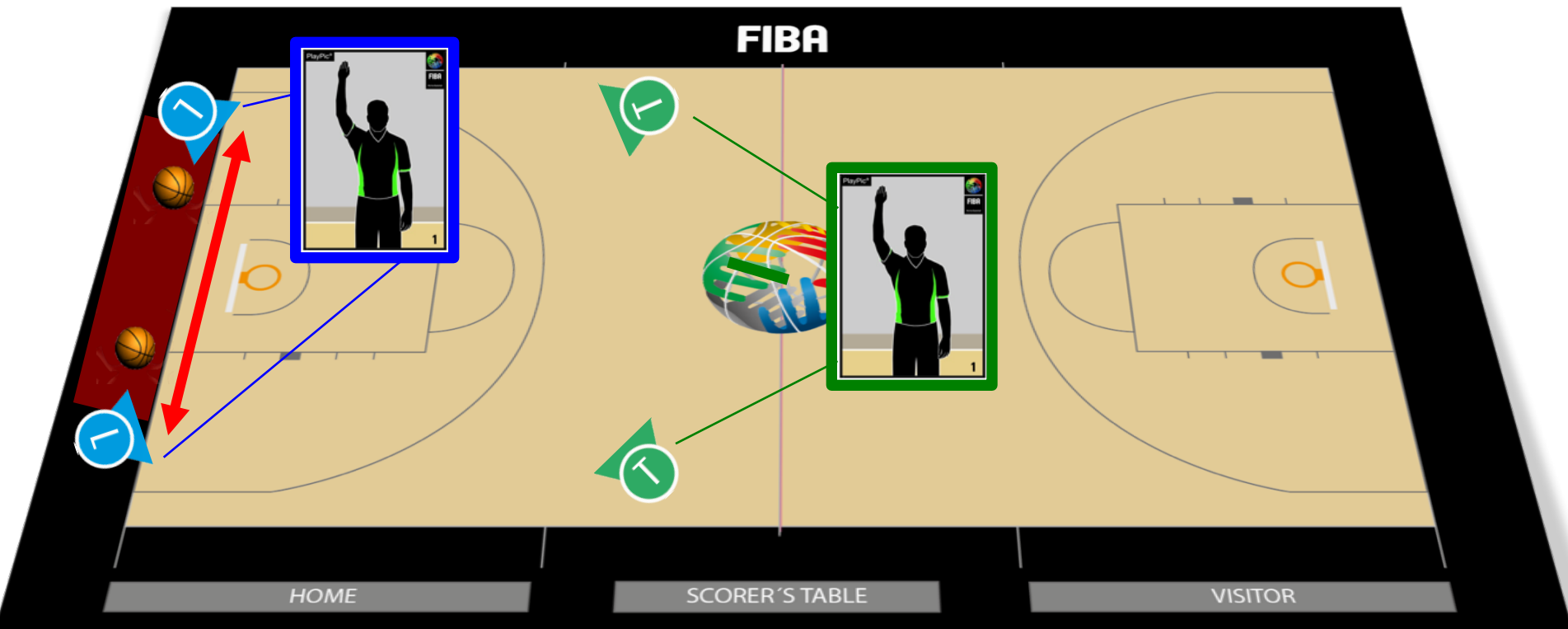
# HALF COURT COVERAGE / LINES



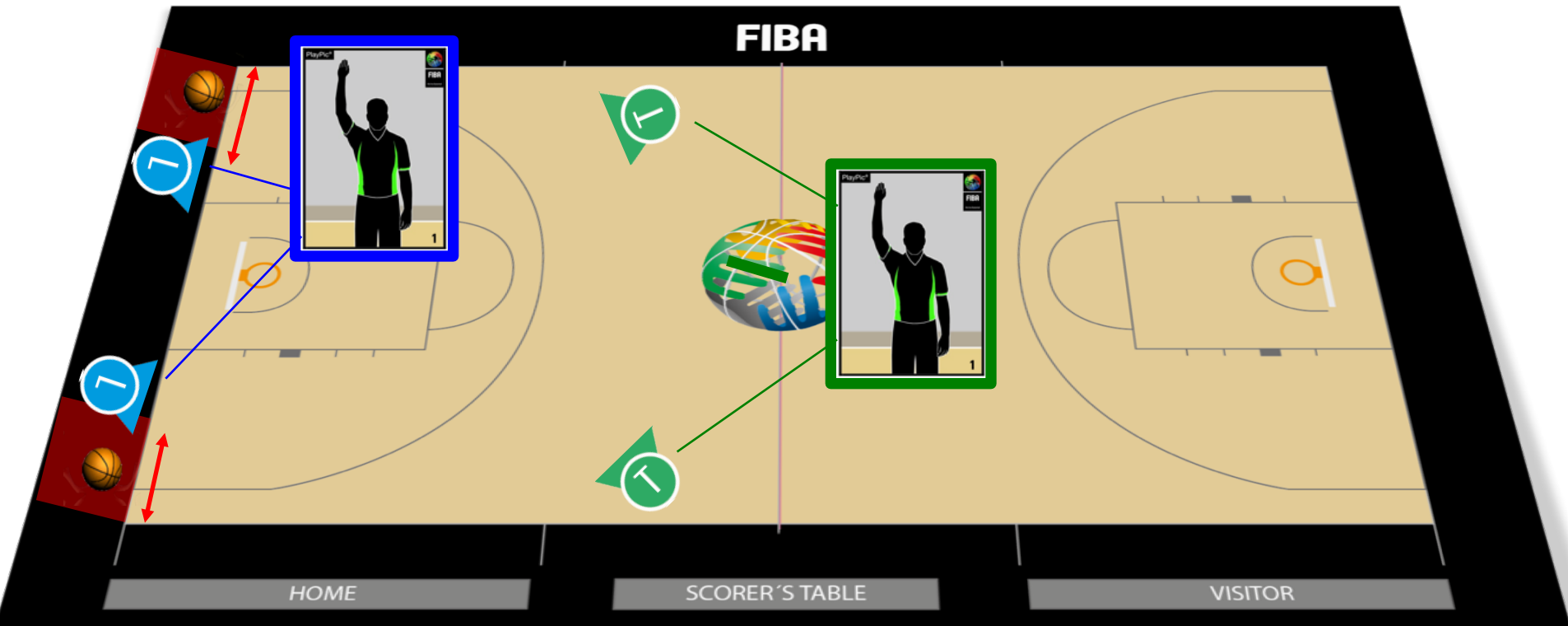
HSB / page  
208



- A) Lead (active referee) outside (basket-ball-referee)
- B) Trail mirrors the time-in signal from Lead



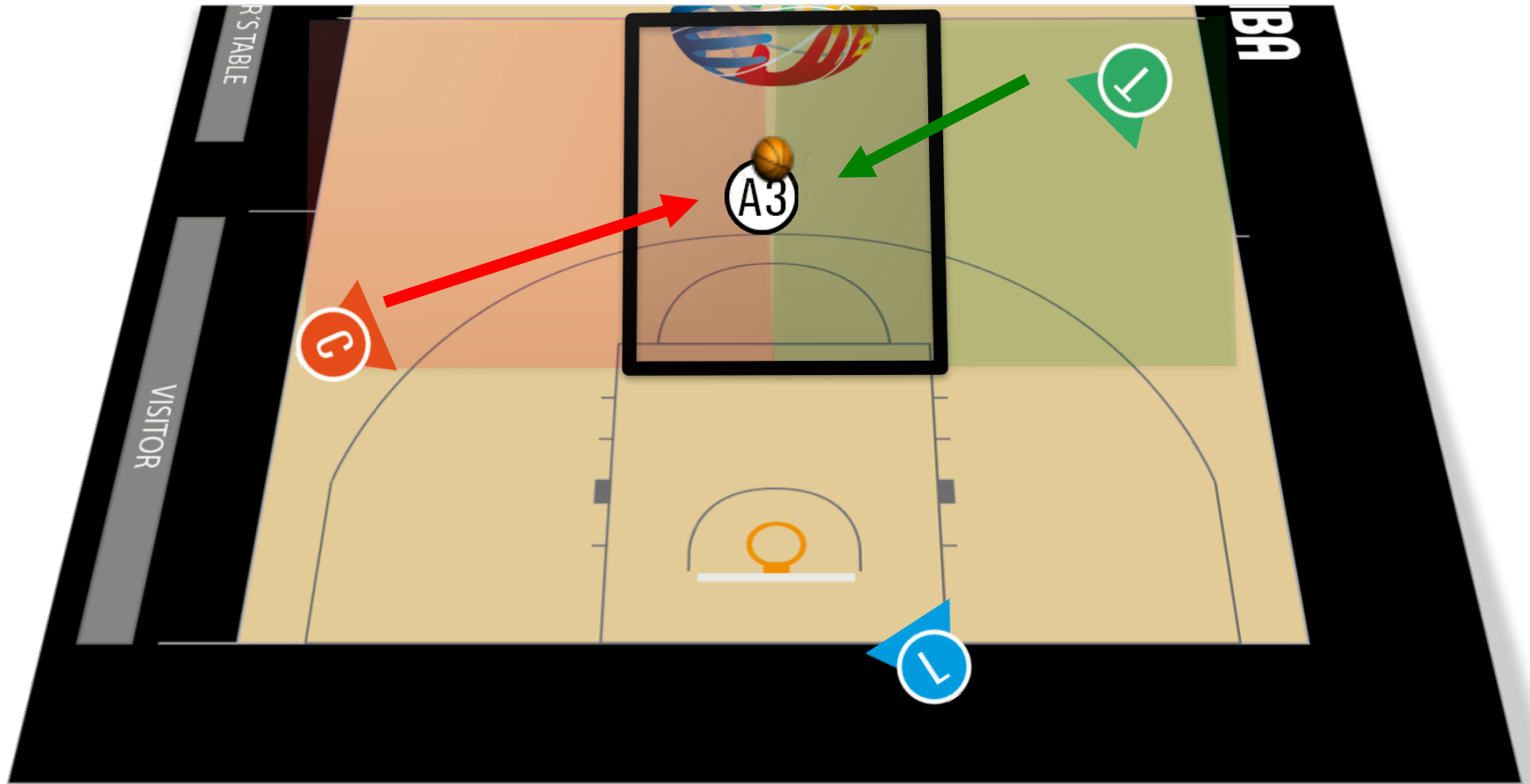
- A) When throw-in in the corner
- B) Lead (active referee) inside (basket-referee-ball)
- C) Trail mirrors the time-in signal from Lead



# CENTER & TRAIL – DUAL COVERAGE



HSB / page  
209

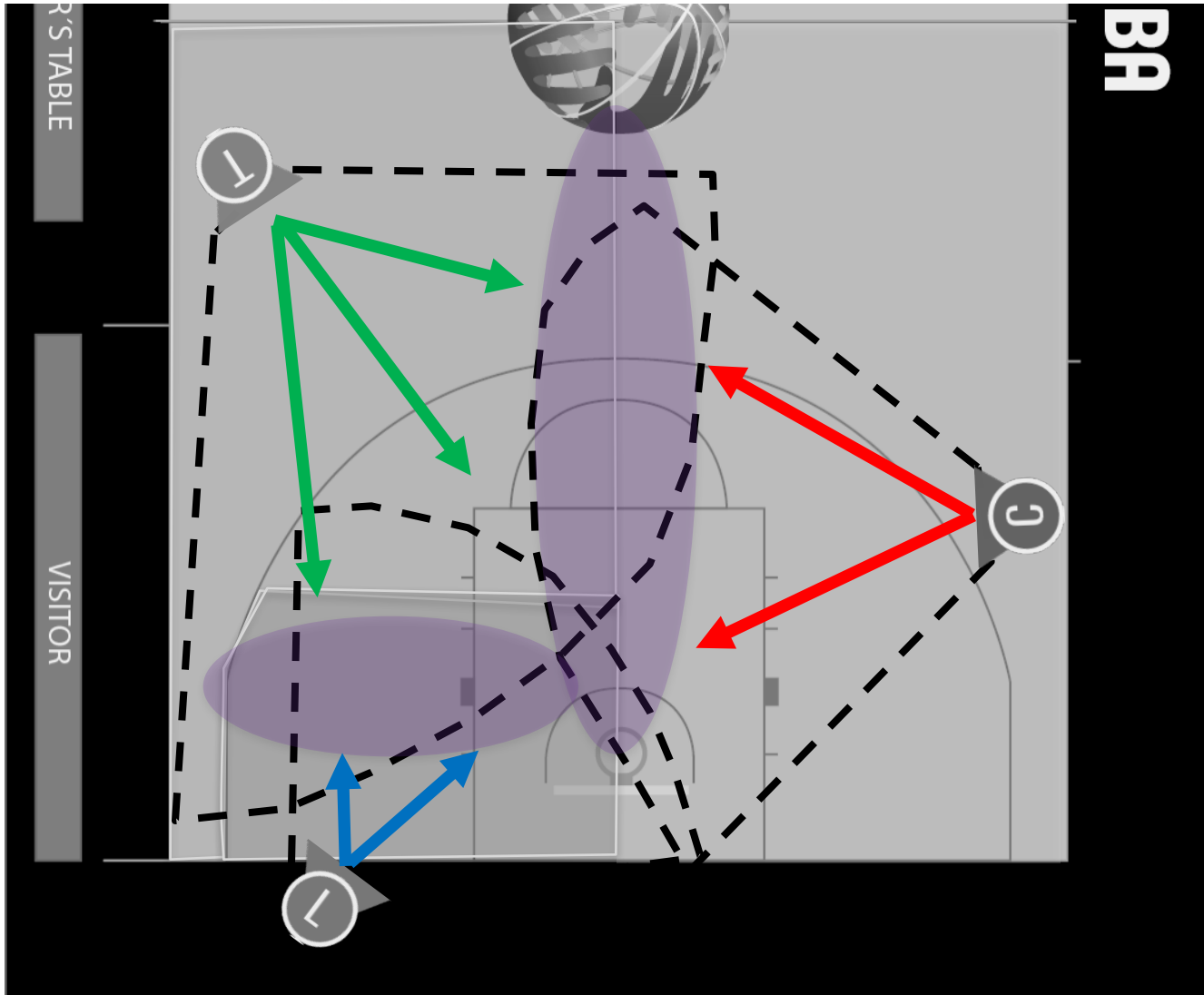




# SHOT COVERAGE DUAL COVERAGE



HSB / page  
209

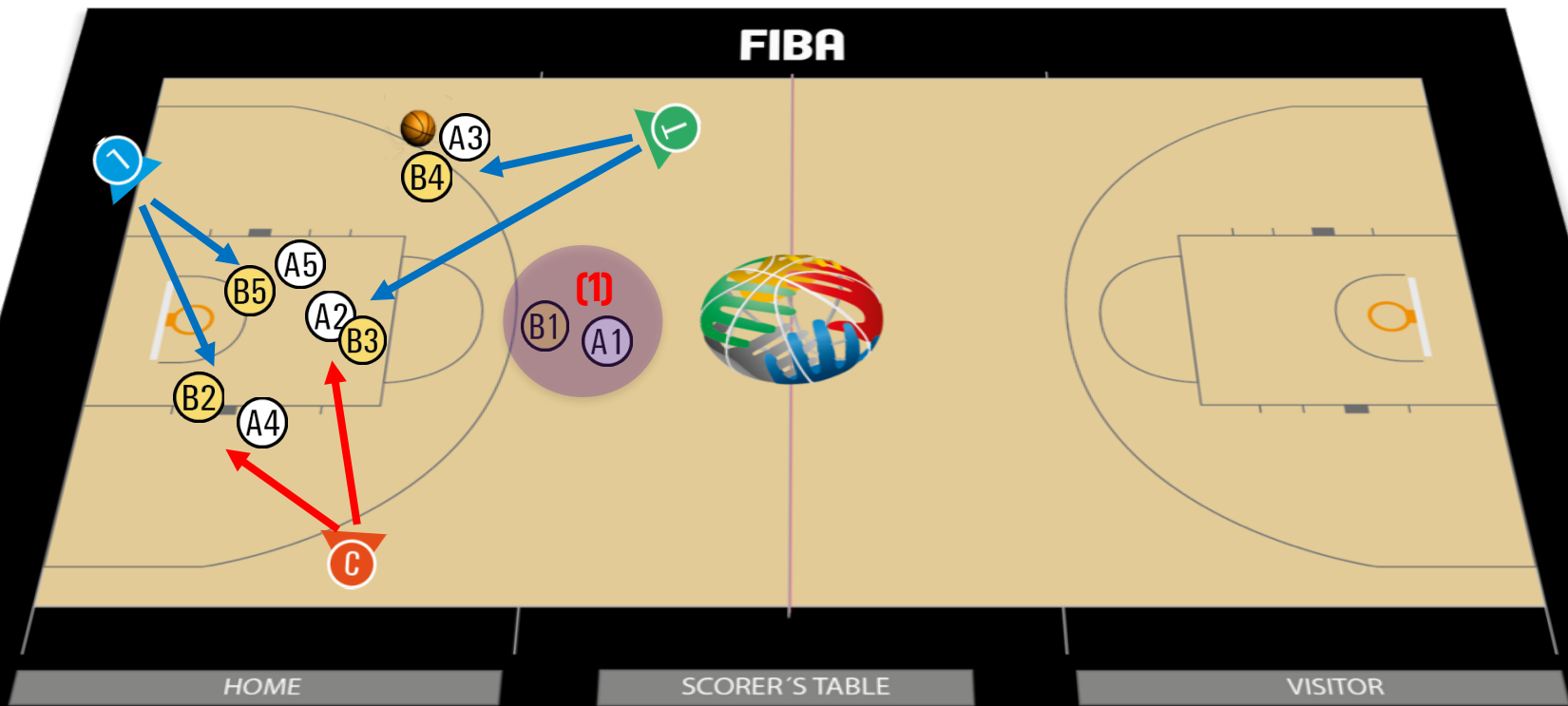


# 3PO BASIC: REBOUND COVERAGE



HSB / page  
210-2112

**1-2 ACTIVE MATCH-UP PER REFEREE**  
**CHALLENGE: PICK-UP THE DIFFERENT MATCH-UPS (PGC)**  
**NORMALLY 1 MATCH-UP CAN BE RULED-OUT (NOT ACTIVE (1))**

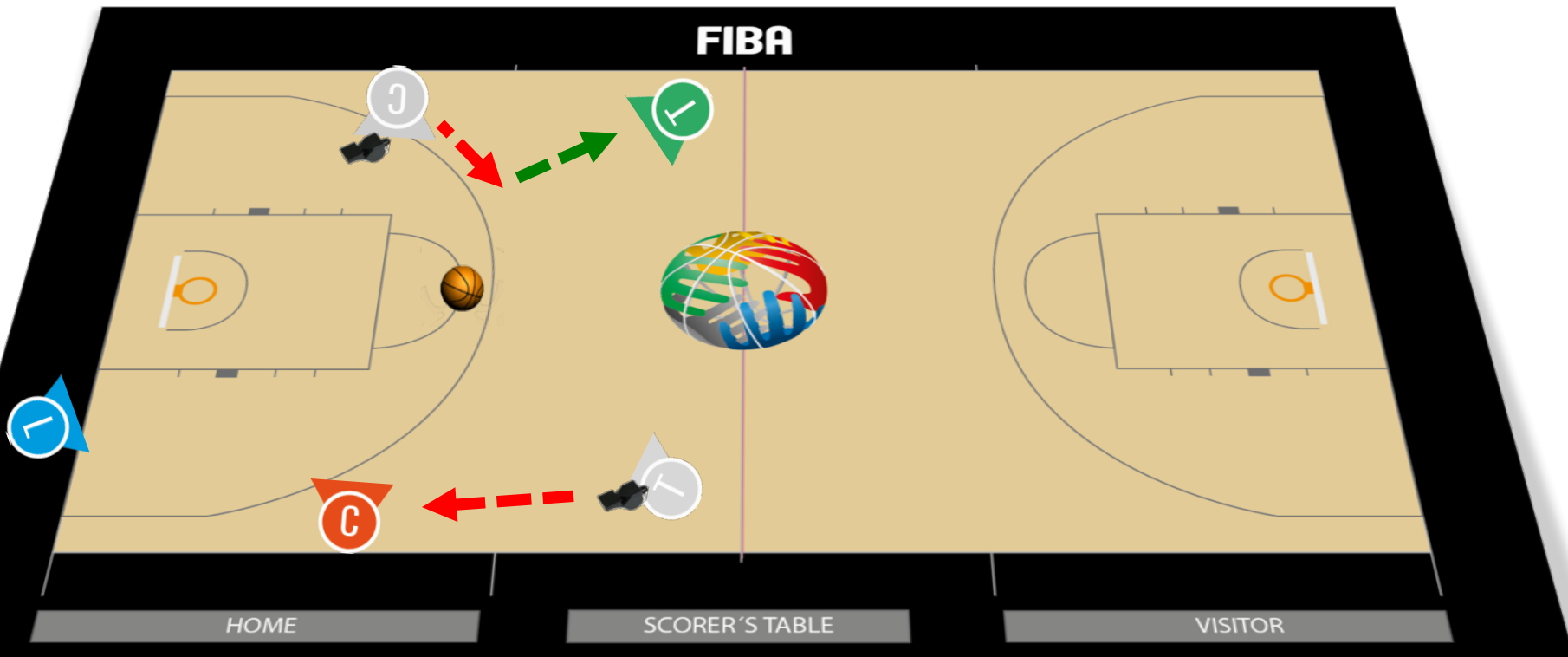


# FOULS / SWITCH - FOUL ON THE FRONT COURT



HSB / page  
213

**DOUBLE WHISTLE BY CENTER & TRAIL  
REFEREE ON THE OPPOSITE SIDE REPORTS THE FOUL**

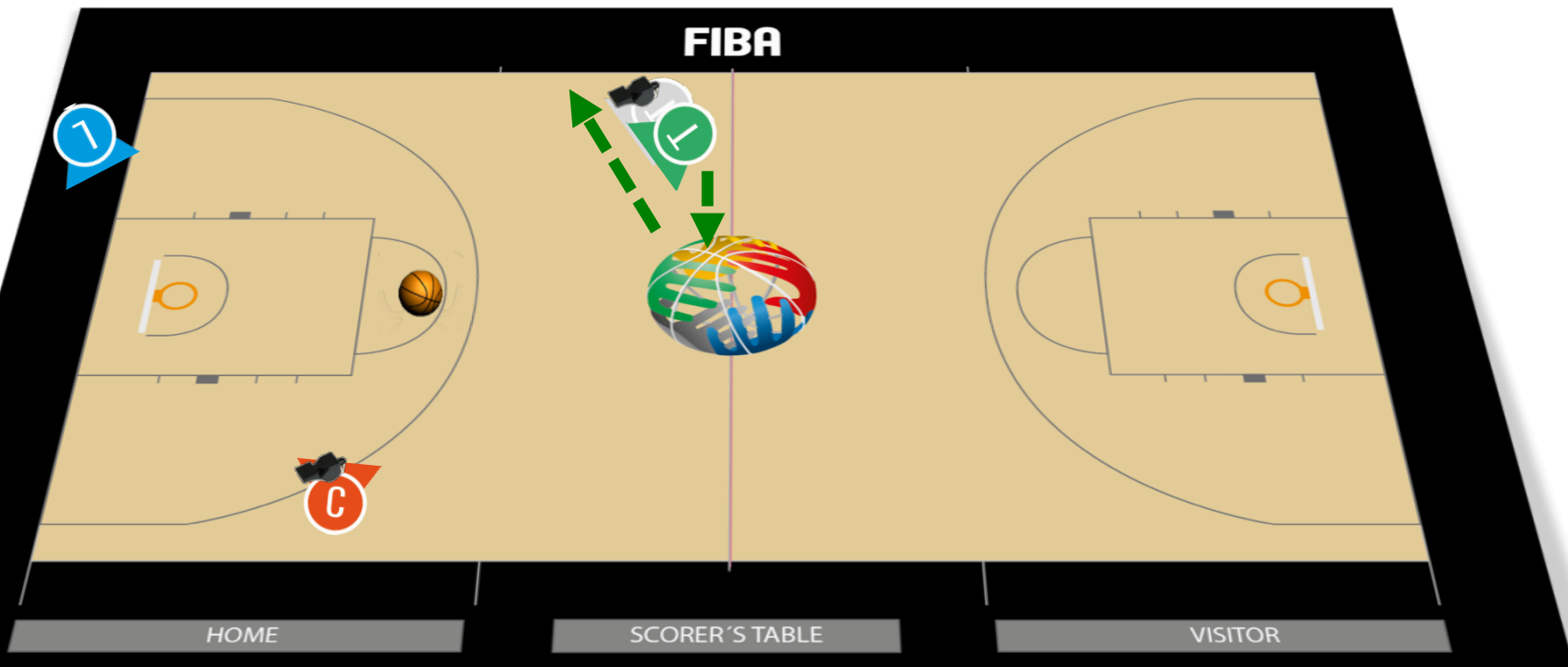


# FOULS / SWITCH - FOUL ON THE FRONT COURT



HSB / page  
213

**DOUBLE WHISTLE BY CENTER & TRAIL  
REFEREE ON THE OPPOSITE SIDE REPORTS THE FOUL**



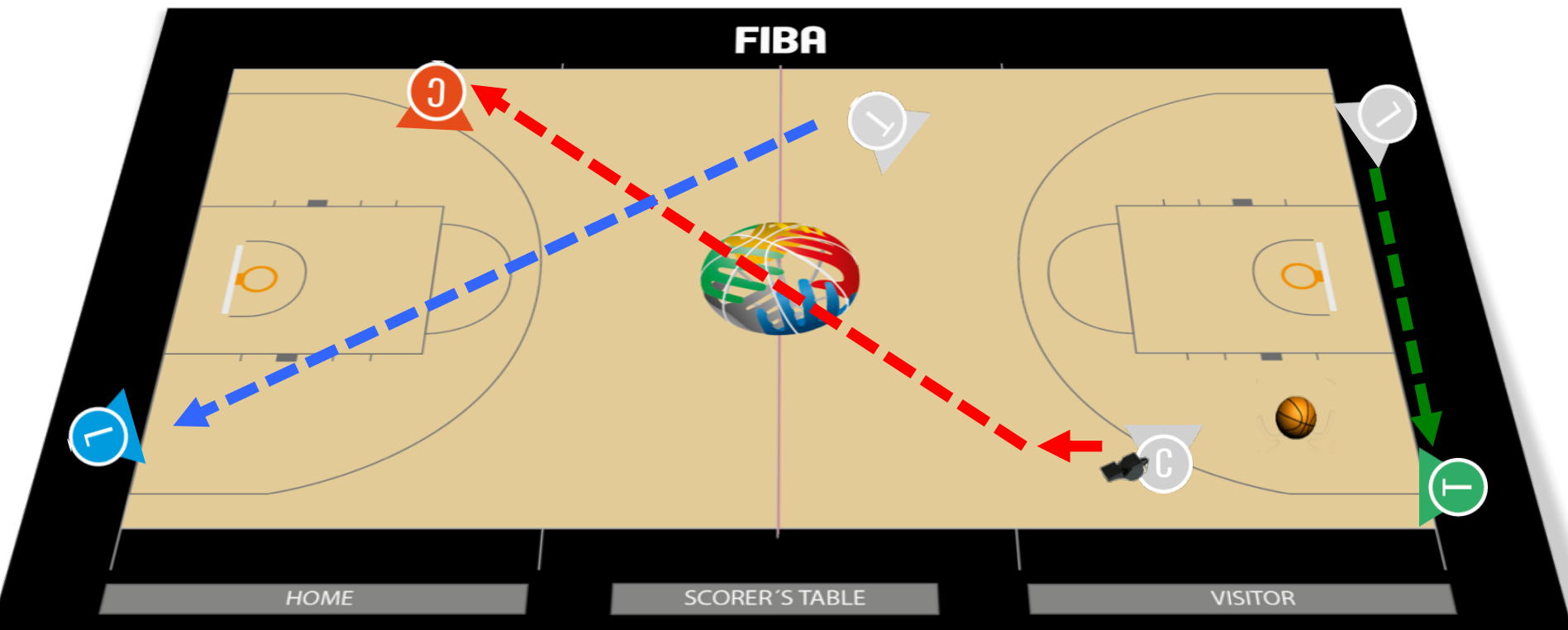


# FOULS / SWITCH - FOUL ON THE BACKCOURT



HSB / page  
214

## NO LONG SWITCHES FOUL ON THE TABLE SIDE BY CENTER

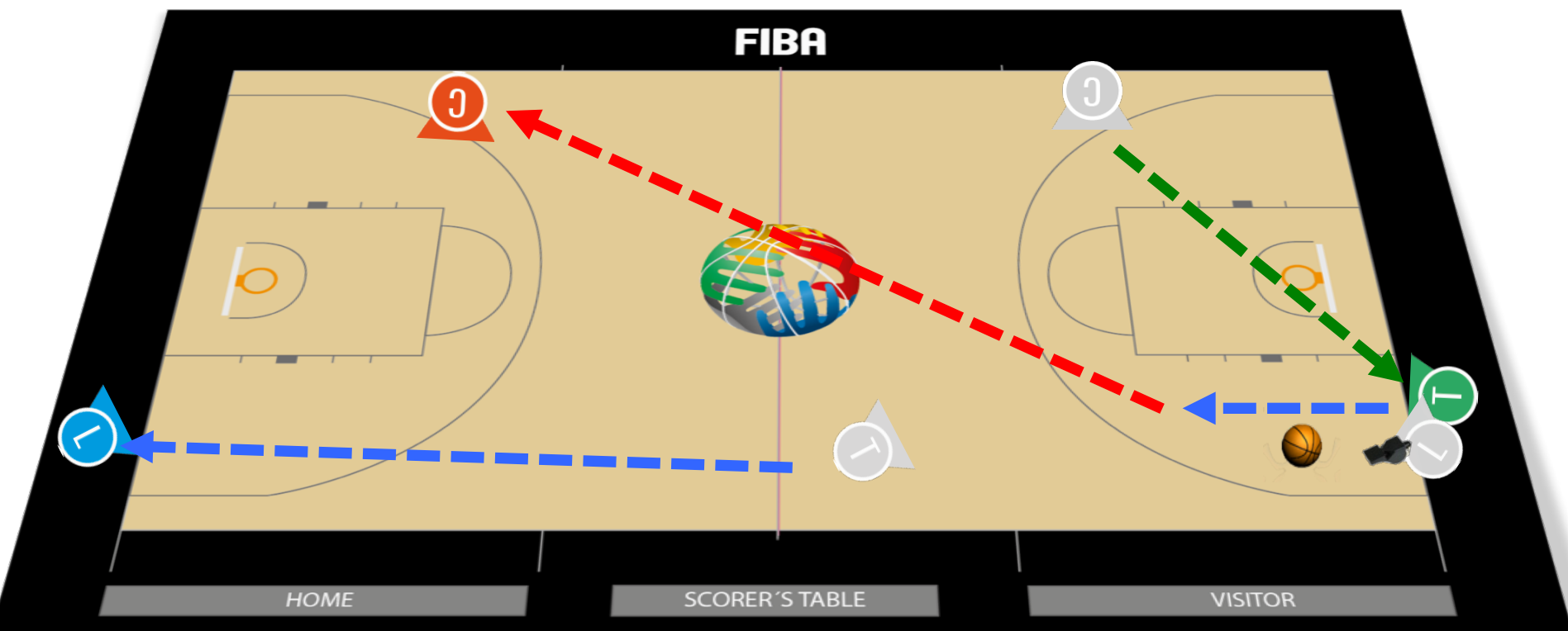


# FOULS / SWITCH - FOUL ON THE BACKCOURT



HSB / page  
214

**NO LONG SWITCHES**  
**FOUL ON THE TABLE SIDE BY LEAD**

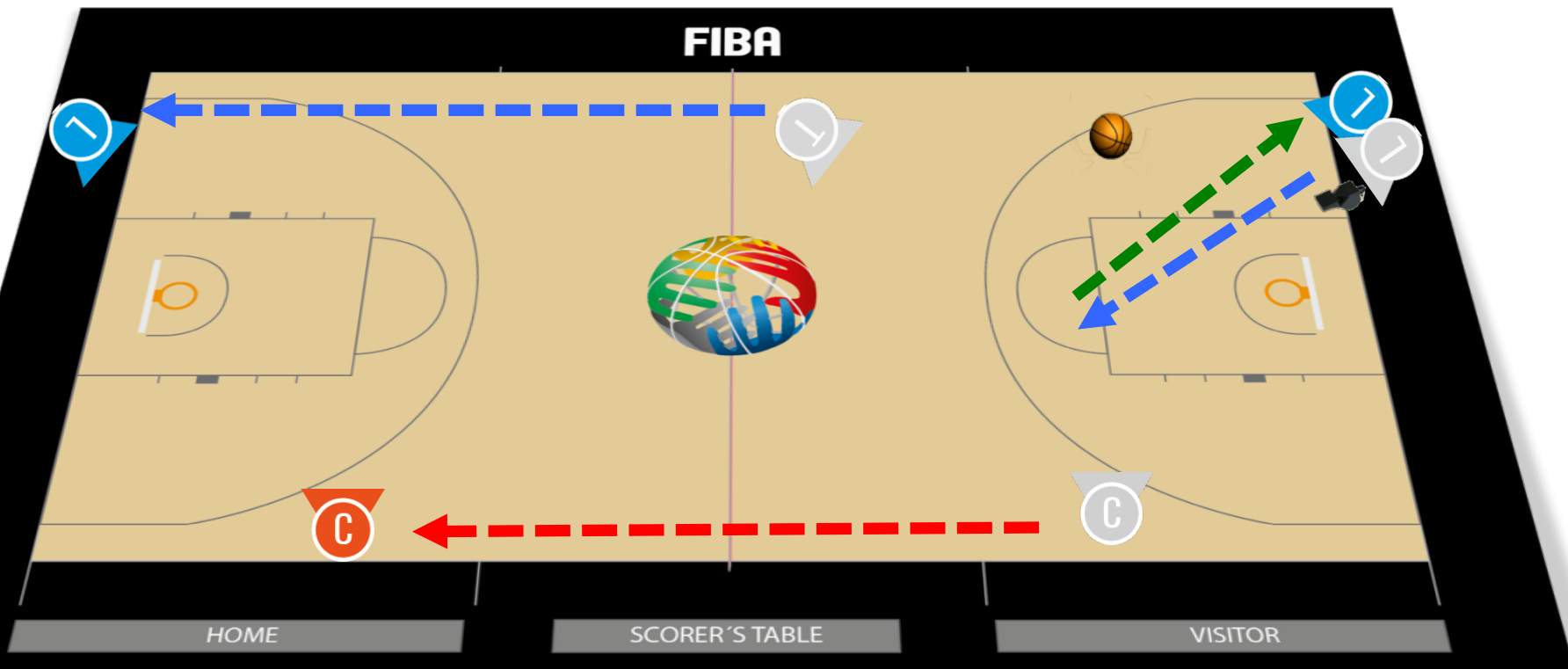


# FOULS / SWITCH - FOUL ON THE BACKCOURT



HSB / page  
214

## NO LONG SWITCHES FOUL ON THE OPPOSITE SIDE BY LEAD

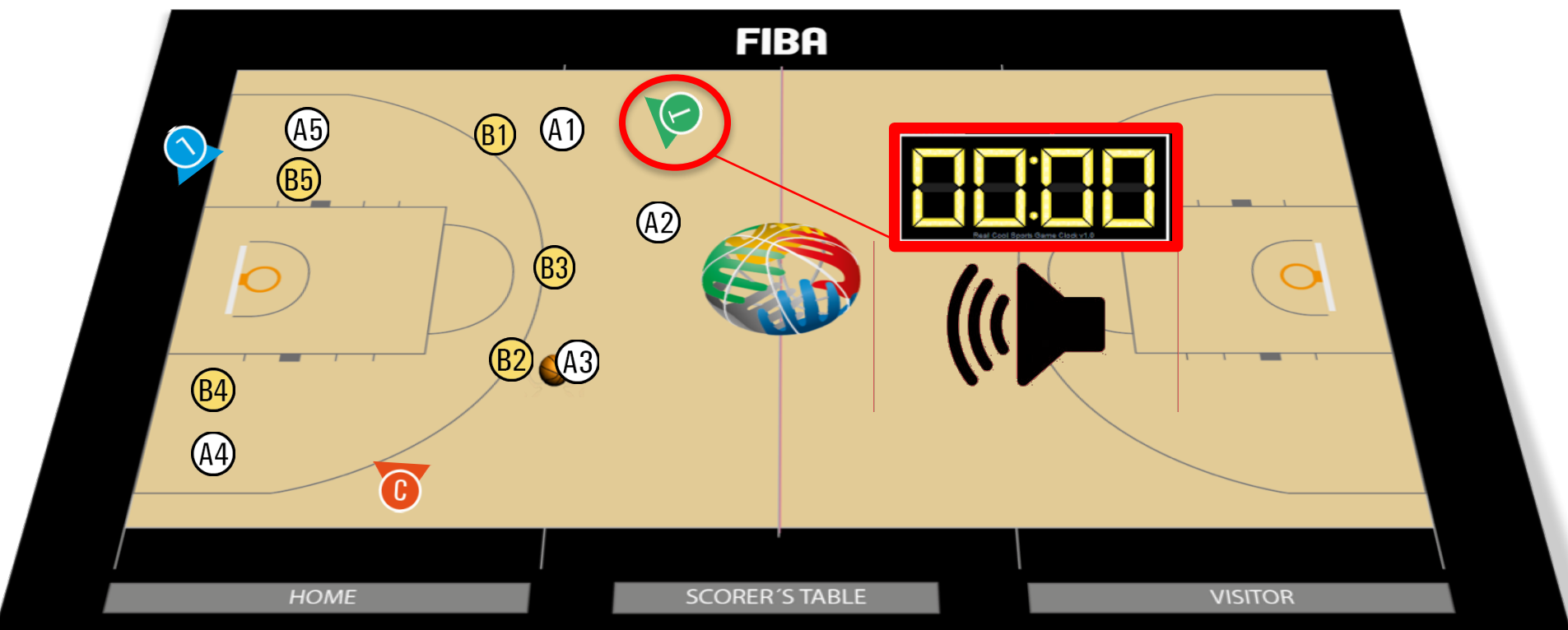




# 3PO BASIC: LAST SHOT – OPPOSITE SIDE REFEREE



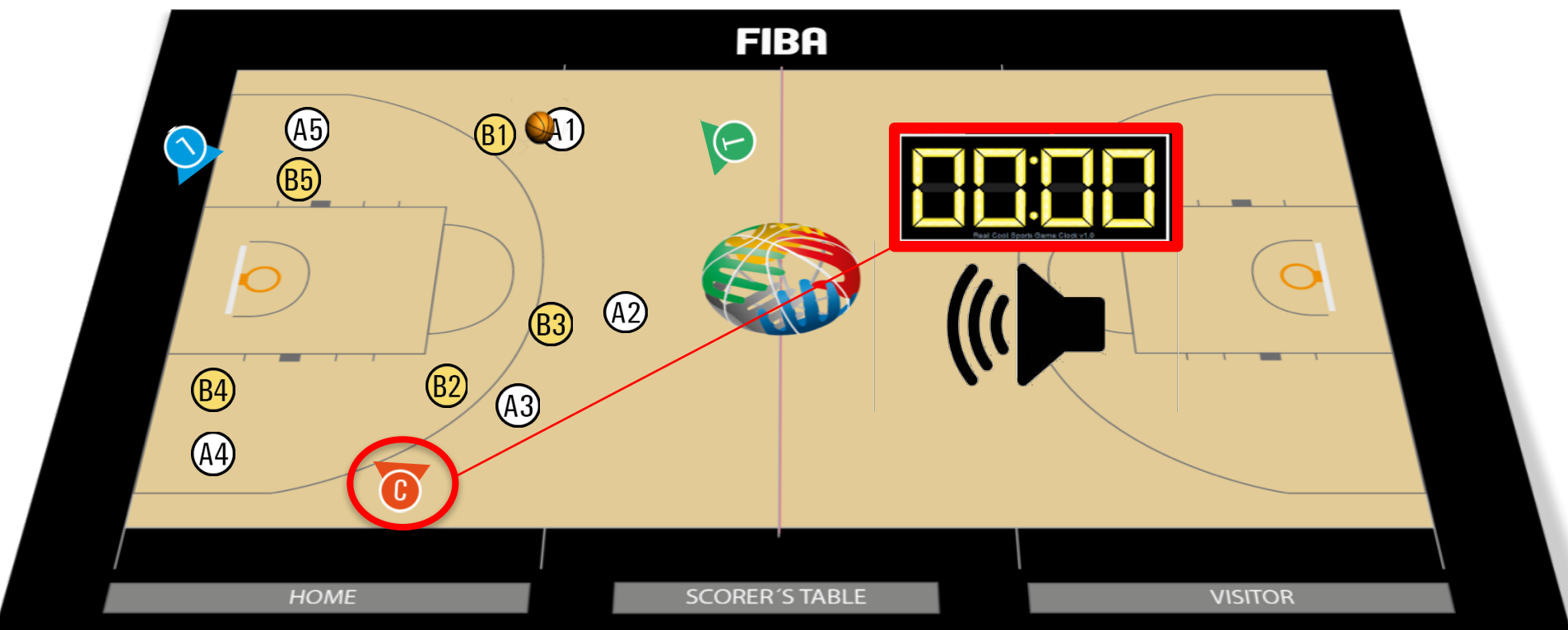
**NORMALLY REFEREE ON THE OPPOSITE SIDE IS RESPONSIBLE FOR THE LAST SHOT AND SIGNAL**



# 3PO BASIC: LAST SHOT – TABLE SIDE REFEREE



**BUT IF REFEREE IS ENGAGED WITH ANOTHER PLAY, IN WHICH CASE THE REFEREE ON THE TABLE SIDE IS RESPONSIBLE FOR THE CLOCK.**



# FREE THROWS – PASSIVE OFFICIAL



**2PO 3PO**

## Administrating Free Throws – Passive Official (Trail & Centre)

1 FREE THROW

2 FREE THROWS

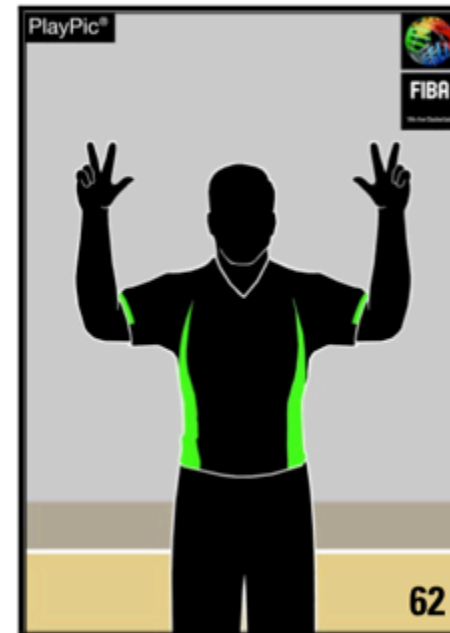
3 FREE THROWS



Index finger



Fingers together  
on both hands

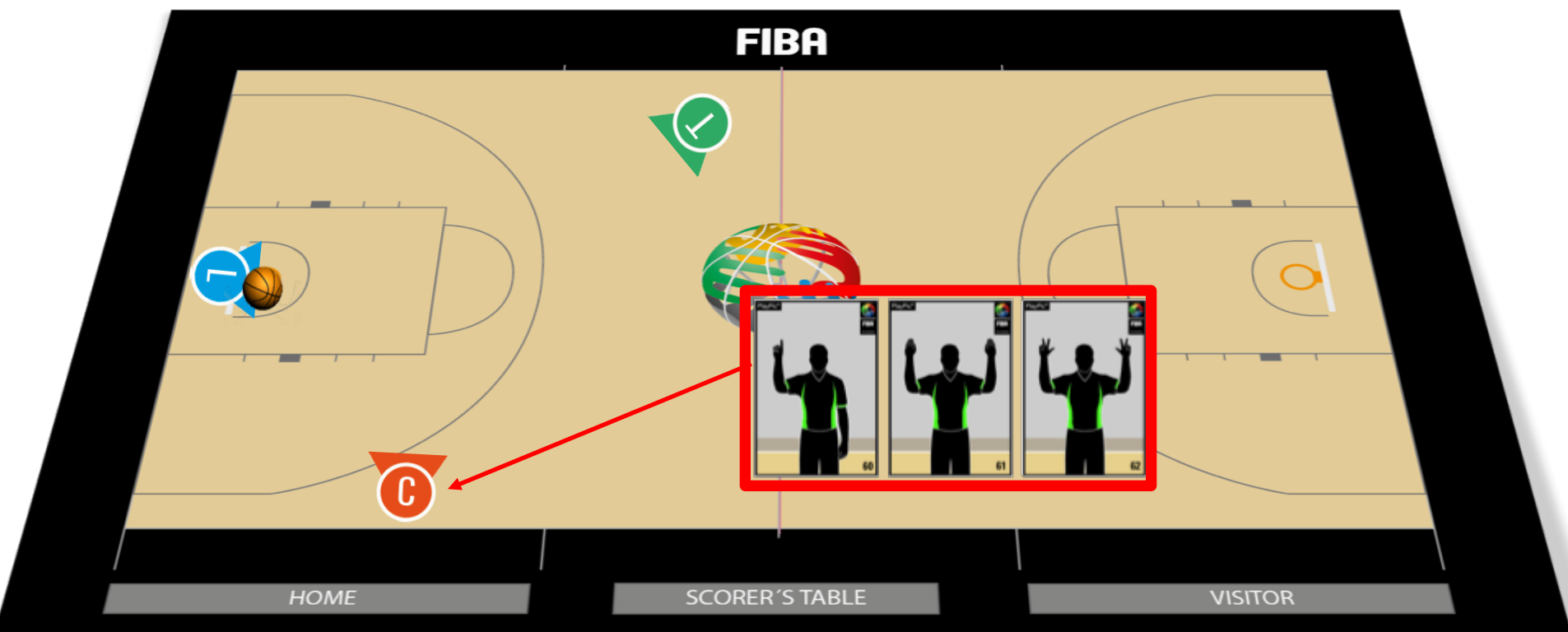


3 fingers extended  
on both hands

# 3PO BASIC: FREE THROWS – PASSIVE OFFICIAL



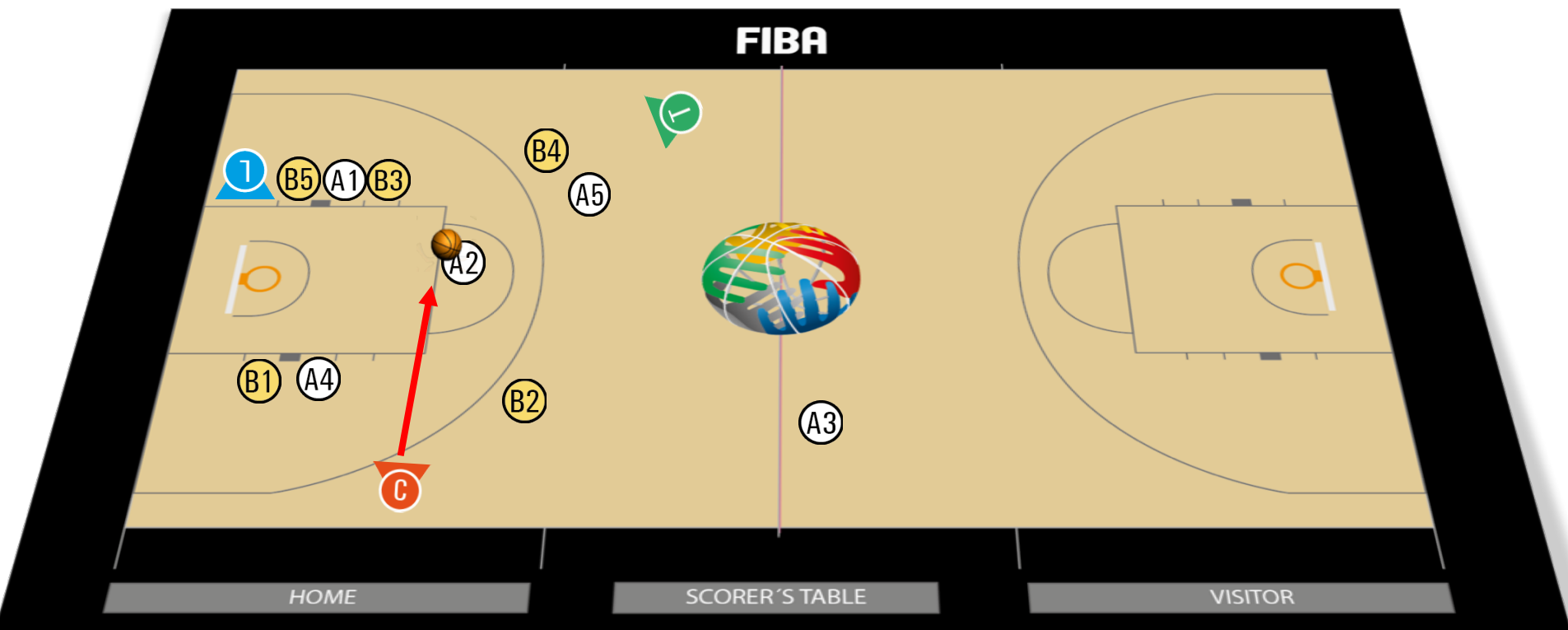
## SIGNALS – CENTER ONLY INDICATES NUMBER OF FREETHROWS



# 3PO BASIC: FREE THROWS – POSITIONS & COVERAGE



## NORMAL POSITIONS: FREE THROW TO BE FOLLOWED MORE FREE THROW(S)

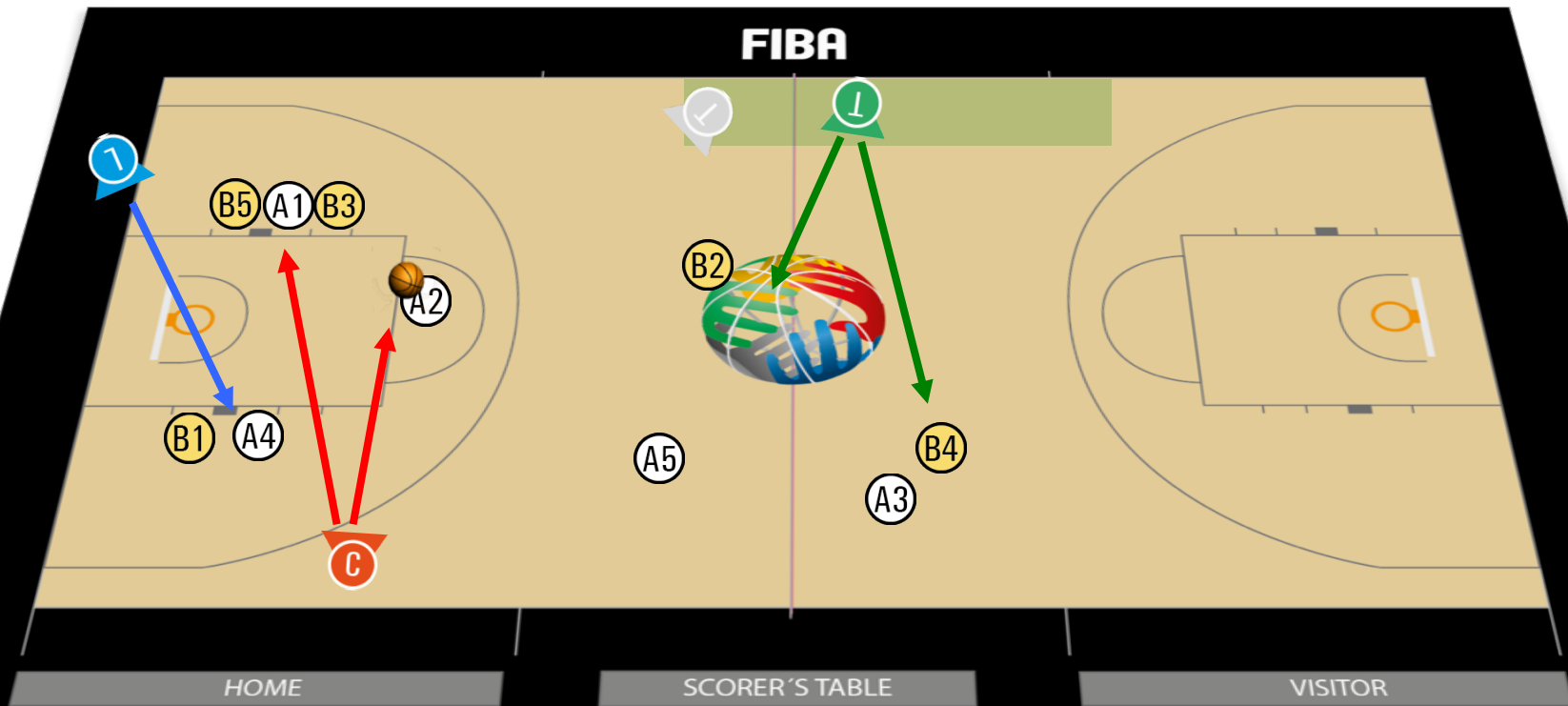




# 3PO ADVANCED: FREE THROWS POSITIONS & COVERAGE



## LAST FREE THROW - PLAYERS IN THE NEW FRONT COURT TRAIL ADJUSTS TOWARDS TO THE NEW FRONT COURT (POSITION DEPENDS ON THE NUMBER OF THE PLAYERS IN THE FRONT COURT & TIME OF THE GAME)





# STANDARD QUALITY

GLOBAL CONNECTION

